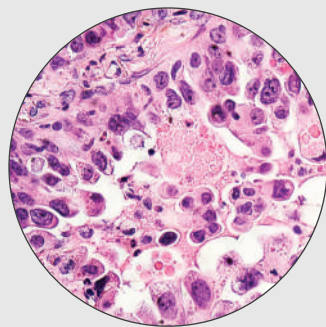
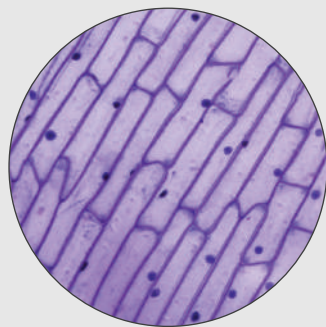


BINOCULAR RESEARCH MICROSCOPE

METZ – 5000 BM



SPECIFICATIONS

Magnification	40x to 1000x
Observation	Binocular 45, 360° rotatable, with interpupillary and diopter adjustment.
Stand	Sturdy and Durable pressure Die cast Aluminium stand.
Stage	Co-axial low drive double plate mechanism system travel on ball bearing guide ways.
Focusing system	Co-axial coarse & fine mechanism system with ball bearing guide ways
Illumination	The illuminator incorporated 3W LED lamp and has adjustable brightness.
Quadruple Nose Piece	A precision mechanism ensures the accuracy and optical alignment of the system
Sub- Stage Condenser	Abbe type N.A. 1.25 with iris diaphragm for resolution and contrast control
DIN-SP Objectives	4x, 10x, 40x (SL) & 100x Oil (SL). Anti fungal & infinity corrected.
Eye Pieces	10x paired. Extra wide field, Anti fungal & Anti reflected.

METZER OPTICAL INSTRUMENTS PVT. LTD.

C-21, GURU NANAK NAGAR, JUNCTION ROAD, MATHURA – 281001

www.metzlab.com
info@metzlab.com
[+91 9897000955](tel:+919897000955)